

South Central Indiana Economic Development Group , IN

Community Profile

**TOTAL
POPULATION
488,828**

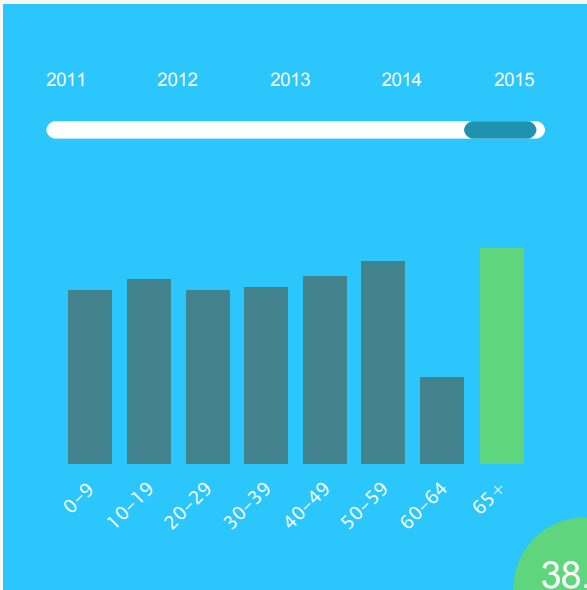
The total population of the Region of South Central Indiana Economic Development Group is 488,828. The median age is 38.89.



The population in South Central Indiana Economic Development Group has grown 0.07% since 2011.



Age Distribution



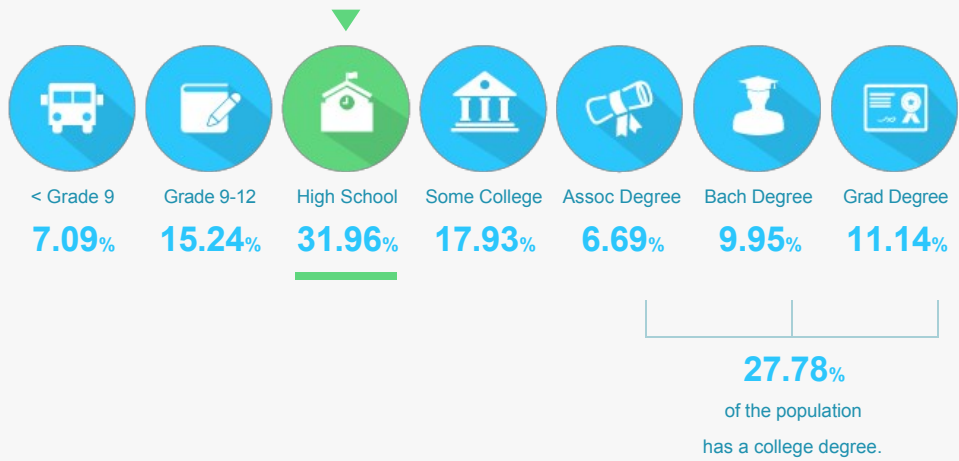
49.3%
Male

50.7%
Female

38.89
Median Age

EDUCATIONAL ATTAINMENT

The majority of the population in South Central Indiana Economic Development Group has completed at least a high school degree.



LABOR FORCE

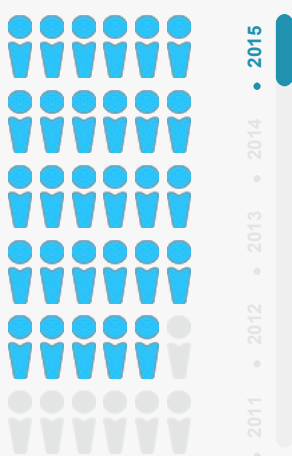
247,765

South Central Indiana Economic Development Group has a labor force of 247,765 people, with a job growth rate of 3.08% since 2011, and an unemployment rate of n/a%.

JOB GROWTH

3.08%

TOTAL EMPLOYEES



224,512
2015

The work distribution of total employees in South Central Indiana Economic Development Group is.

55%
Blue Collar

44%
White Collar

n/a%
Unemployment Rate

▲%
Since 2014

5 TOP TALENT

Where are the top jobs by occupation?

Office and Administrative support



13.89%

31,183

Sales



10.82%

24,285

Food Preparation/Serving



5.27%

11,826

Production Workers



13.3%

29,856

Executive, Managers, and Administrators



7.77%

17,446

TOTAL ESTABLISHMENTS

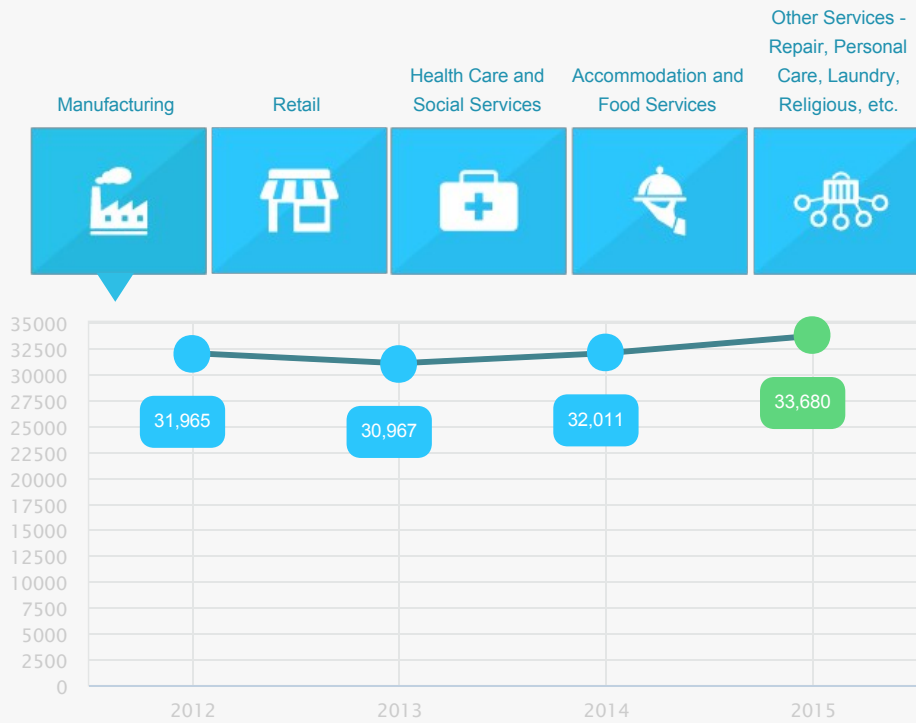
17,904

BUSINESSES AND JOBS

South Central Indiana Economic Development Group has a total of 17,904 businesses. In 2015, the leading industries were:

Manufacturing, Retail, Health Care and Social Services, Accommodation and Food Services, and Other Services - Repair, Personal Care, Laundry, Religious, etc.

Which are the top 5 industries by jobs?



How many employees do businesses in South Central Indiana Economic Development Group have?

1-4 Employees	58.78%
5-9 Employees	20.48%
10-19 Employees	10.04%
20-49 Employees	6.31%
50-99 Employees	2.56%

INCOME AND SPENDING

Workers in South Central Indiana Economic Development Group earn an average yearly household income of \$47,316. 39.43% of the households earn more than the national average each year. Household expenditures average \$49,776 per year. The majority of earnings get spent on Shelter, Transportation, Food and Beverages, Health Care, and Entertainment.

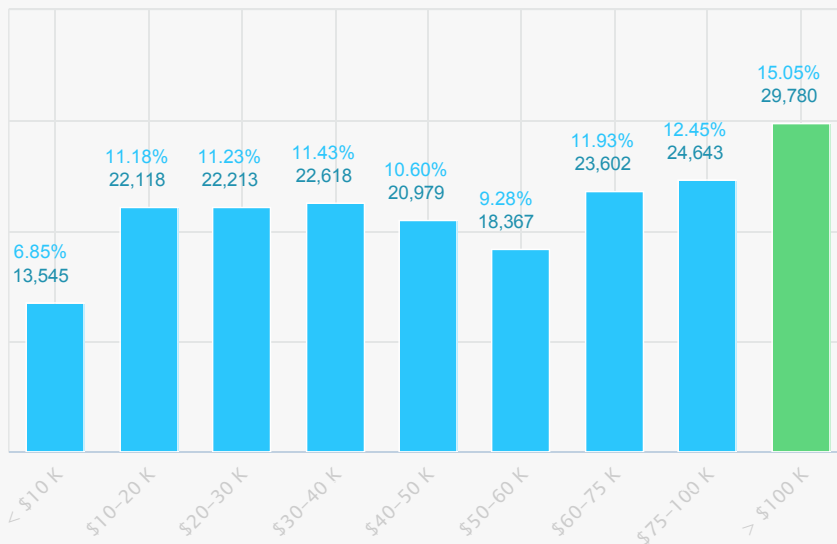
There are 43% more households who own their homes than there are renters.



MEDIAN
**HOUSEHOLD
INCOME
\$47,316**

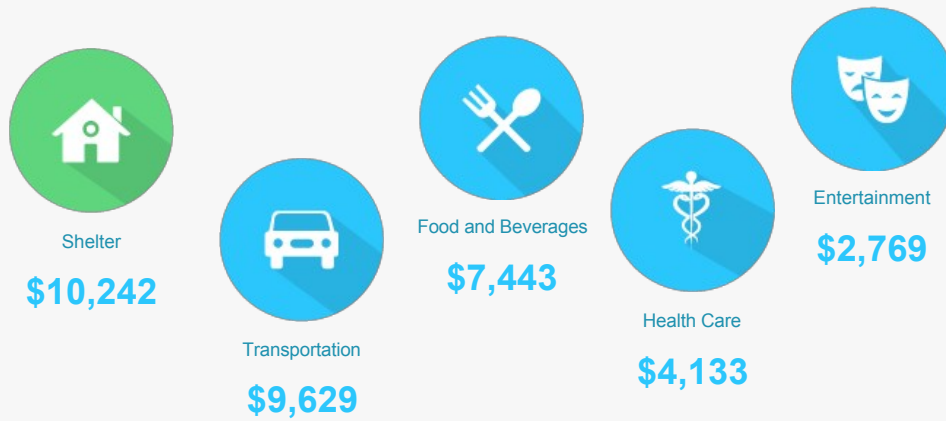
1% less than the state
14% less than the nation

Income Distribution



How do people spend much of their money?

\$ PER HOUSEHOLD



The average household expenditure in South Central Indiana Economic Development Group is:

\$49,776

HOUSING

